

DESCRIPTION:

High capacity float and thermostatic (internal air vent) steam traps are designed for draining condensate from all types of low and medium pressure steam heating and process equipment.

Typical applications include unit heaters, heat exchangers, driers and jacketed vessels.

Horizontal installation.

AVAILABLE TYPES:

PT 66 - with thermostatic air vent

PT 66S- SLR (with steam lock release)

PT 66C - with thermostatic air vent and SLR.

FEATURES:

Modulating discharge.

Discharges condensate at steam temperature.

Excellent air venting (by thermostatic air vent).

USE: Saturated and superheated steam.

SIZES: DN40, 50

CONNECTIONS: Screwed (NPT/BSPT/BSP)
Flanged / Socket weld

Non IBR¹ / IBR

LIMITING CONDITIONS:

PMA: Max. allowable pressure	16 bar(g)
TMA: Max. allowable temperature	220 °C
PMO: Max. operating pressure	14 bar(g)
TMO: Max. operating temperature	220 °C
Body shell design rating	20 bar(g) 426 °C
Cold hydro test pressure	32 bar(g)



INSTALLATION:

Horizontal installation with flow from left to right.

The trap should be installed horizontally below the drain point of the equipment in a position such that the float arm is in a horizontal plane and the float rises and falls vertically, with the flow direction as indicated on the cover.

The arrow on the nameplate should be pointing vertically upwards.

Max. differential pressure range:

PT66-4.5 : 4.5 bar

PT66-10 : 10 bar

PT66-14 : 14 bar

TRAP DISCHARGE CAPACITY IN kg/hr

MODEL	Orifice* Size (mm)	DIFFERENTIAL PRESSURE (kg/cm ²)																
		0.04	0.07	0.14	0.35	0.70	1.00	1.40	2.10	2.80	3.50	4.50	5.25	7.00	8.50	10.0	12.25	14.00
PT66-4.5	28.0	3150	3850	5220	6045	6390	7400	8025	9940	11550	12910	15300	-----	-----	-----	-----	-----	-----
PT66-10	20.0	2035	2560	2820	3760	4700	5745	6525	7310	7830	8610	9800	10440	12005	13310	15050	-----	-----
PT66-14	16.0	1300	1575	2230	2580	3000	3660	4175	4675	5015	5510	6325	6670	7675	8510	9005	10525	11645

*Double seated valve

¹Indian Boiler Regulations

MATERIAL:

NO.	PART	MATERIAL	QTY.(Nos.)
1.	BODY	ASTM A216 Gr. WCB	01
2.	COVER	ASTM A216 Gr. WCB	01
3.	GASKET	CAF / Non CAF	01
4.	VALVE SEAT	13% CR STEEL /	02
5.	VALVE PIN	AISI 410/420	02
6.	BALL FLOAT	AISI 304	01
7.	LEVER	AISI 304	01
8.	AIR VENT	STAINLESS STEEL	01
9.	BOLT	ASTM A193 Gr. B7	06
10.	DRAIN PLUG	CARBON STEEL	01
11.	STEM	AISI 304	01
12.	SLR UNIT	AISI 304	01

WEIGHT

Screwed/SW	Flanged
31 kg	35 kg

AVAILABLE SPARES:

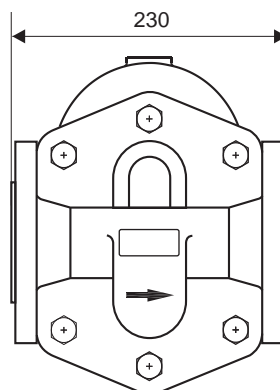
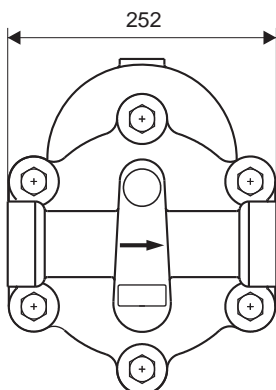
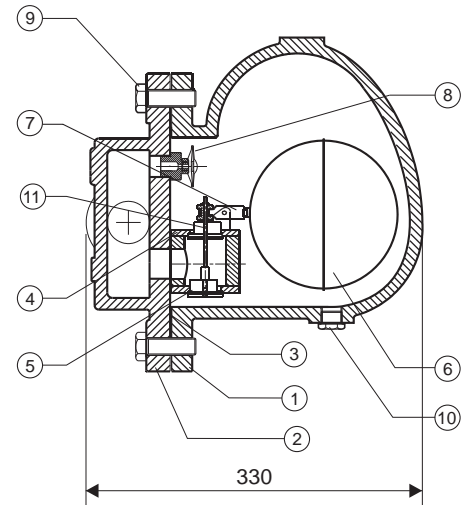
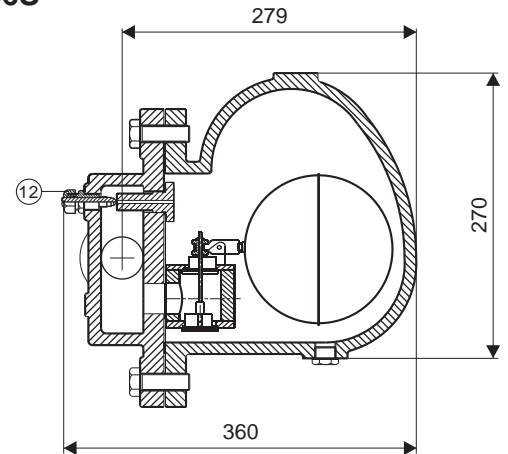
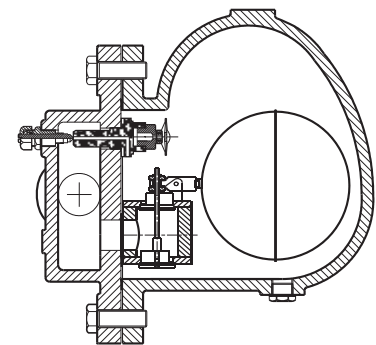
Valve Seat, Ball Float & Lever Assy., Air Vent, Gaskets.

HOW TO ORDER:

PT66-4.5 DN40 BSP

ORDERING INFORMATION:

- 1) Inlet Pressure in bar (g)
- 2) Back Pressure in bar (g)
- 3) Operating Temperature in °C
- 4) Condensate Load in kg/hr
- 5) Size & Model
- 6) End Connections.


PT66

PT66S

PT66C


DIMENSIONS - Nominal in mm

Local regulations may restrict the use of this product below the conditions quoted. Limiting conditions refer to standard connections only. In the interest of development and improvement of the product, we reserve the right to change the specifications without prior notice.