

DESCRIPTION:

Cast iron float and thermostatic (internal air vent) steam traps are designed for draining condensate from all types of low and medium pressure steam heating and process equipment.

Typical applications include unit heaters, heat exchangers, driers and jacketed vessels.

Horizontal installation.

AVAILABLE TYPES:

- PT 65 - with thermostatic air vent
- PT 65S- SLR (with steam lock release)
- PT 65C - with thermostatic air vent and SLR.

FEATURES:

- Modulating discharge.
- Discharges condensate at steam temperature.
- Excellent air venting (by thermostatic air vent).

USE: Saturated and superheated steam.

SIZES: DN40, 50

CONNECTIONS: Screwed (NPT/BSPT/BSP)

LIMITING CONDITIONS:

PMA: Max. allowable pressure	16 bar(g)
TMA: Max. allowable temperature	220 °C
PMO: Max. operating pressure	14 bar(g)
TMO: Max. operating temperature	220 °C
Cold hydro test pressure	32 bar(g)



INSTALLATION:

Horizontal installation with flow from left to right.

The trap should be installed horizontally below the drain point of the equipment in a position such that the float arm is in a horizontal plane and the float rises and falls vertically, with the flow direction as indicated on the cover.

The arrow on the nameplate should be pointing vertically upwards.

Max. differential pressure range:

- PT65-4.5 : 4.5 bar
- PT65-10 : 10 bar
- PT65-14 : 14 bar

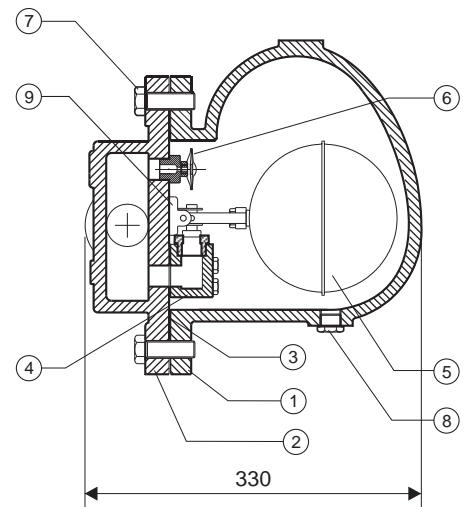
TRAP DISCHARGE CAPACITY IN kg/hr

MODEL	SIZE	DIFFERENTIAL PRESSURE (bar)																
		0.5	1	1.5	2	3	4	4.5	5	6	7	8	9	10	11	12	13	14
PT65-4.5	DN40,50	3022	3272	3521	3787	4295	4795	5056	-----	-----	-----	-----	-----	-----	-----	-----	-----	-----
PT65-10	DN40,50	2234	2684	2847	2920	3097	3337	3417	3526	3700	4030	4404	4790	5119	-----	-----	-----	-----
PT65-14	DN40,50	1944	2268	2538	2777	2972	3097	3176	3251	3367	3620	3887	4125	4366	4586	4795	4994	5190

Recommended safety factor: steady condns. 1.5 - 2; fluctuating condns. 2-3

MATERIAL:

NO.	PART	MATERIAL	QTY.(Nos.)
1.	BODY	CAST IRON	01
2.	COVER	CAST IRON	01
3.	GASKET	CAF / Non CAF	01
4.	VALVE SEAT	13% CR STEEL / AISI 410/420	01
5.	BALL FLOAT & LEVER ASSY.	AISI 304	01
6.	AIR VENT	STAINLESS STEEL	01
7.	BOLT	ASTM A193 Gr. B7	06
8.	DRAIN PLUG	CARBON STEEL	01
9.	BRACKET ASSY.	AISI 304	01
10.	SLR UNIT	AISI 304	01

PT65

WEIGHT:

29 kg

AVAILABLE SPARES:

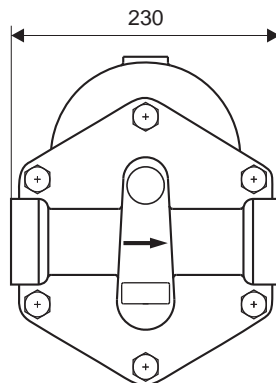
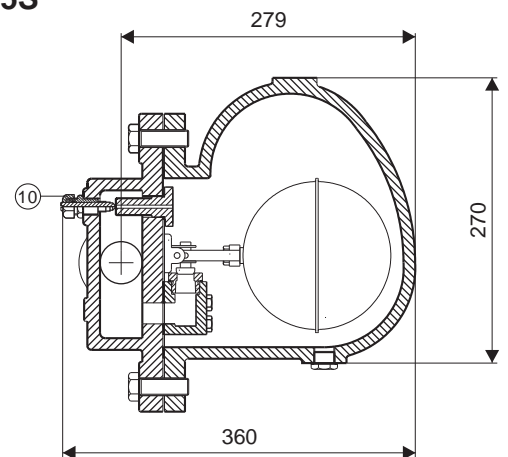
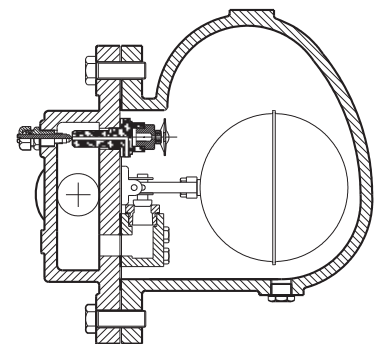
Valve Seat, Ball Float & Lever Assy., Air Vent, Gaskets.

HOW TO ORDER:

PT65-4.5 DN40 BSP

ORDERING INFORMATION:

- 1) Inlet Pressure in bar (g)
- 2) Back Pressure in bar (g)
- 3) Operating Temperature in °C
- 4) Condensate Load in kg/hr
- 5) Size & Model
- 6) End Connections.


PT65S

PT65C


DIMENSIONS - Nominal in mm

Local regulations may restrict the use of this product below the conditions quoted. Limiting conditions refer to standard connections only. In the interest of development and improvement of the product, we reserve the right to change the specifications without prior notice.