

DESCRIPTION

Thermodynamic steam trap in alloy steel construction with full stainless steel internals. Best suited for medium/high pressure line drains, with low to medium condensate load.

SALIENT FEATURES:

- Complete stainless steel internals ensure better mechanical & corrosion resistance properties.
- Condensate entry below the disc, concentric to the disc/seat ensures a clean & parallel lift of the disc with reference to the seat, eliminating localised wear & tear.
- The disc & seat are fully hardened by a special hardening process, to withstand continuous, prolonged operation.
- Perfect shut off, no steam loss.
- Robust, maintenance free, fully guaranteed.

SIZES : DN 15, 20

CONNECTIONS: Socket weld / Flanged*

*End connection flanges are welded on.

Non IBR¹ / IBR

LIMITING CONDITIONS:

PMA: Max. allowable pressure	65 bar (g)
TMA: Max. allowable temp.	510°C
Maximum operating back pressure at the outlet should not exceed 80% of the inlet pressure	
Minimum differential pressure for satisfactory operation	1.5 bar
Cold hydro test pressure	130 bar (g)

INSTALLATION:

The trap will operate in any position but the preferred installation is in a horizontal position with the cover on the top. Full port isolating valves should be installed upstream and downstream of the trap. Always open isolation valves slowly until normal operating conditions are achieved to avoid system shocks.



MAINTENANCE:

All worn or damaged parts should be replaced with new spares. The disc seat is not replaceable. Ensure that all gaskets are replaced every time the trap is dismantled.

IMPORTANT:

The trap should be installed as close as possible to the line to be drained.

For new pipelines, ensure that the lines are properly flushed, prior to fitting the traps, to avoid strainer choke-up.

¹Indian Boiler Regulations

MATERIAL:

No.	PART	MATERIAL	QTY. (Nos.)
1.	BODY	ASTM A217 Gr. WC6	1
2.	COVER	ASTM A217 Gr. WC6	1
3.	STRAINER CAP	ASTM A217 Gr. WC6	1
4.	DISC SEAT	ASTM A681 Gr. D2	1
5.	DISC	ASTM A681 Gr. D2	1
6.	STRAINER	AISI 304	1
7.	GASKET	SPIRAL WOUND (SS) WITH GRAFOIL FILLER	1
8.	BOLT	ASTM A193 Gr. B7	4

DIMENSIONS - Nominal in mm

END CONNS.	SIZE	A	B	C	D	E	Wt.
SOCKET WELD	DN15, 20	90	81	55	102	40	2.5 kg

AVAILABLE SPARES:

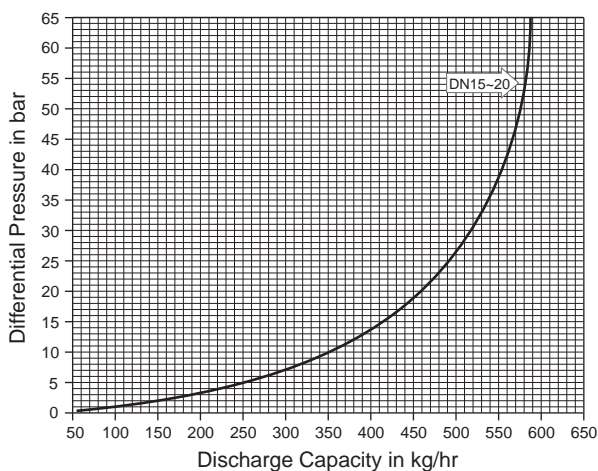
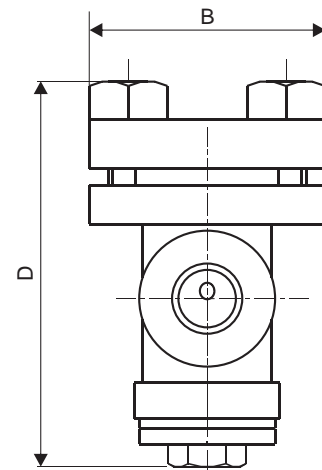
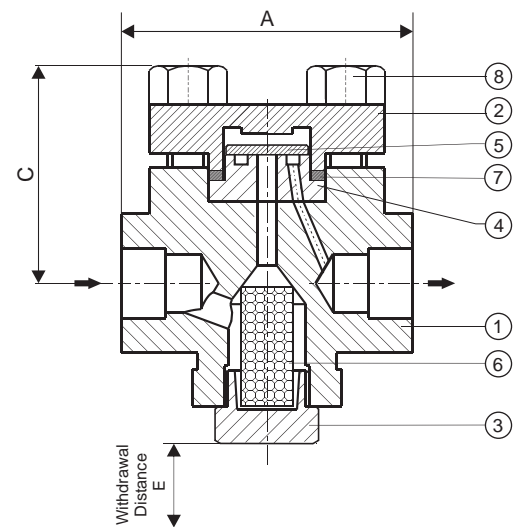
Disc, Gasket, Strainer Screen

HOW TO ORDER:

PT13 DN15 BSP NIBR

ORDERING INFORMATION:

- 1) Inlet Pressure in bar (g)
- 2) Back Pressure in bar (g)
- 3) Operating Temperature in °C
- 4) Condensate Load in kg/hr
- 5) Size & Model
- 6) End Connections
- 7) IBR / Non-IBR



Local regulations may restrict the use of this product below the conditions quoted. Limiting conditions refer to standard connections only. In the interest of development and improvement of the product, we reserve the right to change the specifications without prior notice.