

#### DESCRIPTION:

PA61 ball float air eliminator is designed to automatically discharge air/gas present in liquid systems. This means no liquid loss occurs as with manual venting.

#### SALIENT FEATURES:

Improves circulation of pressurized liquids

SIZES: DN15, 20

CONNECTIONS: Screwed (NPT / BSPT / BSP)

#### LIMITING CONDITIONS:

|                                 |              |
|---------------------------------|--------------|
| PMA: Max allowable pressure     | 16 bar (g)   |
| TMA: Max. allowable temperature | 220 °C       |
| PMO: Max operating pressure     | 10.5 bar (g) |
| Cold hydro test pressure        | 32 bar (g)   |

#### AIR DISCHARGE CAPACITY AT 1 bar (abs) & 15° C

| Diff. Pressure<br>bar(g) | Orifice<br>size | m <sup>3</sup> /hr |
|--------------------------|-----------------|--------------------|
| 1.00                     | 2.5 mm          | 4.09               |
| 2.00                     |                 | 6.14               |
| 3.00                     |                 | 8.18               |
| 5.00                     |                 | 12.28              |
| 7.00                     |                 | 16.37              |
| 9.00                     |                 | 20.46              |
| 10.50                    |                 | 23.64              |

#### INSTALLATION:

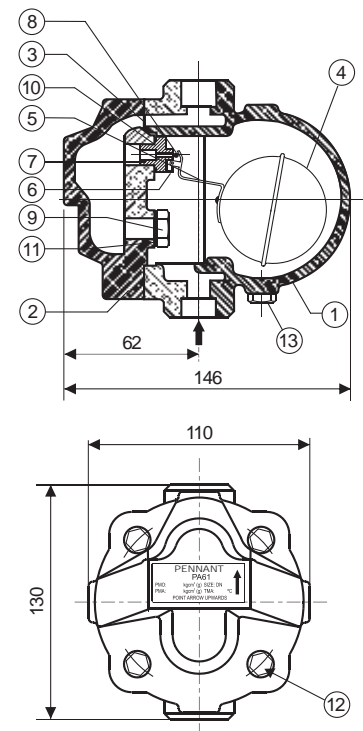
Vertical installation with flow from bottom to top. The air eliminator should be installed at all high points of a liquid system wherever air can collect. It should be installed vertically above the pipe or equipment with inlet at the bottom.

The arrow on the nameplate should be pointing vertically upwards.

#### AVAILABLE SPARES:

Valve seat, Ball float & lever assy., Gaskets.

WEIGHT (approx): 3.3 kg



All dimensions in mm

#### MATERIAL:

| No. | PART          | MATERIAL      | QTY (Nos.) |
|-----|---------------|---------------|------------|
| 1.  | BODY          | CAST IRON     | 01         |
| 2.  | COVER         | CAST IRON     | 01         |
| 3.  | COVER GASKET  | NON CAF       | 01         |
| 4.  | FLOAT ASSY.   | AISI 304      | 01         |
| 5.  | LEVER ASSY.   | AISI 304      | 01         |
| 6.  | BRACKET ASSY. | AISI 304      | 01         |
| 7.  | VALVE SEAT    | 13% Cr. STEEL | 01         |
| 8.  | VALVE         | 13% Cr. STEEL | 01         |
| 9.  | PLUG          | AISI 304      | 01         |
| 10. | SEAT GASKET   | COPPER        | 01         |
| 11. | PLUG GASKET   | COPPER        | 01         |
| 12. | BOLT          | HIGH TENSILE  | 04         |
| 13. | DRAIN PLUG    | C.S.          | 01         |

#### CAUTION:

DO NOT USE FOR HAZARDOUS /  
POISONOUS MEDIA

Local regulations may restrict the use of this product below the conditions quoted. Limiting conditions refer to standard connections only. In the interest of development and improvement of the product, we reserve the right to change the specifications without prior notice.